

**Punishment that works;
less crime – a safer society**



Release -

- ☐ **The punishment is the restriction of liberty**
- ☐ No other rights have been removed by the sentencing court
- ☐ The offender has all the same rights as all other who live in Norway.
- ☐ No-one shall serve their sentence under stricter circumstances than necessary for the security in the community.
- ☐ During the serving of a sentence, life inside will resemble life outside as much as possible
- ☐ Preparing for releaseretuning into the society 😊

Returning into the society

☐ Public safety

- strict regimes
- open regimes
- alternative sentence

☐ Reintegration

- empowerment
- family
- municipalities
- treatment

Public safety -

- ☐ Society shall be protected against those who are dangerous or who do not intend to change their criminal lifestyle.
- ☐ The risk of new criminality during the penal implementation is low when the security level is high.
- ☐ A long prisons sentence with a high security level means a high risk of recidivism following release.
- ☐ Penal implementation out in the community is more effective for rehabilitation than prison – is therefor the best long-term public protection.

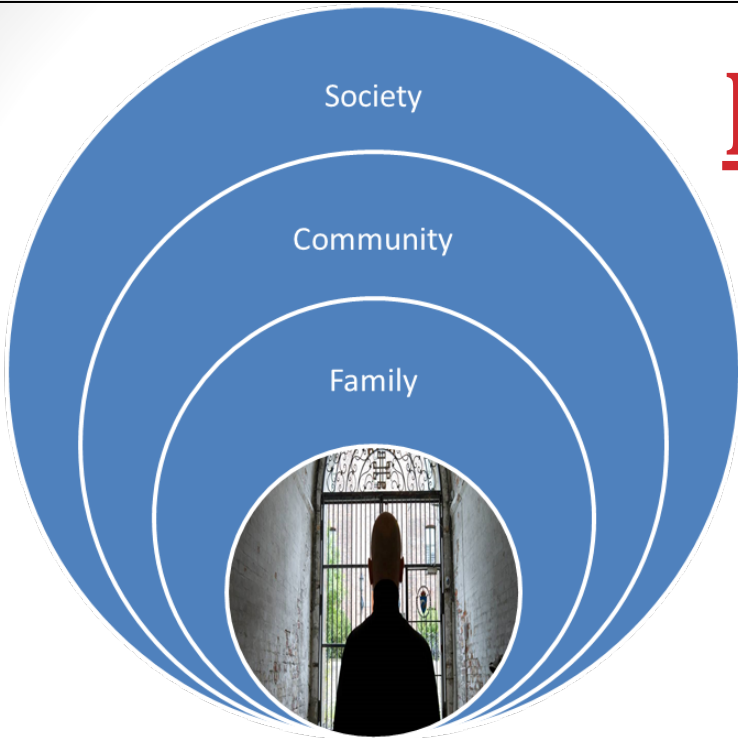
The government agrees that sentences served in freedom act to prevent new crime and to build a better society for us all -

NORMALITY -

- ☐ Restriction of liberty
- ☐ Security regime
- ☐ Prison life
- ✓ Security
- ✓ Institutions and personnel
- ✓ Infrastructure and financial resources

You need a reason to deny his/her rights – not to grant them!

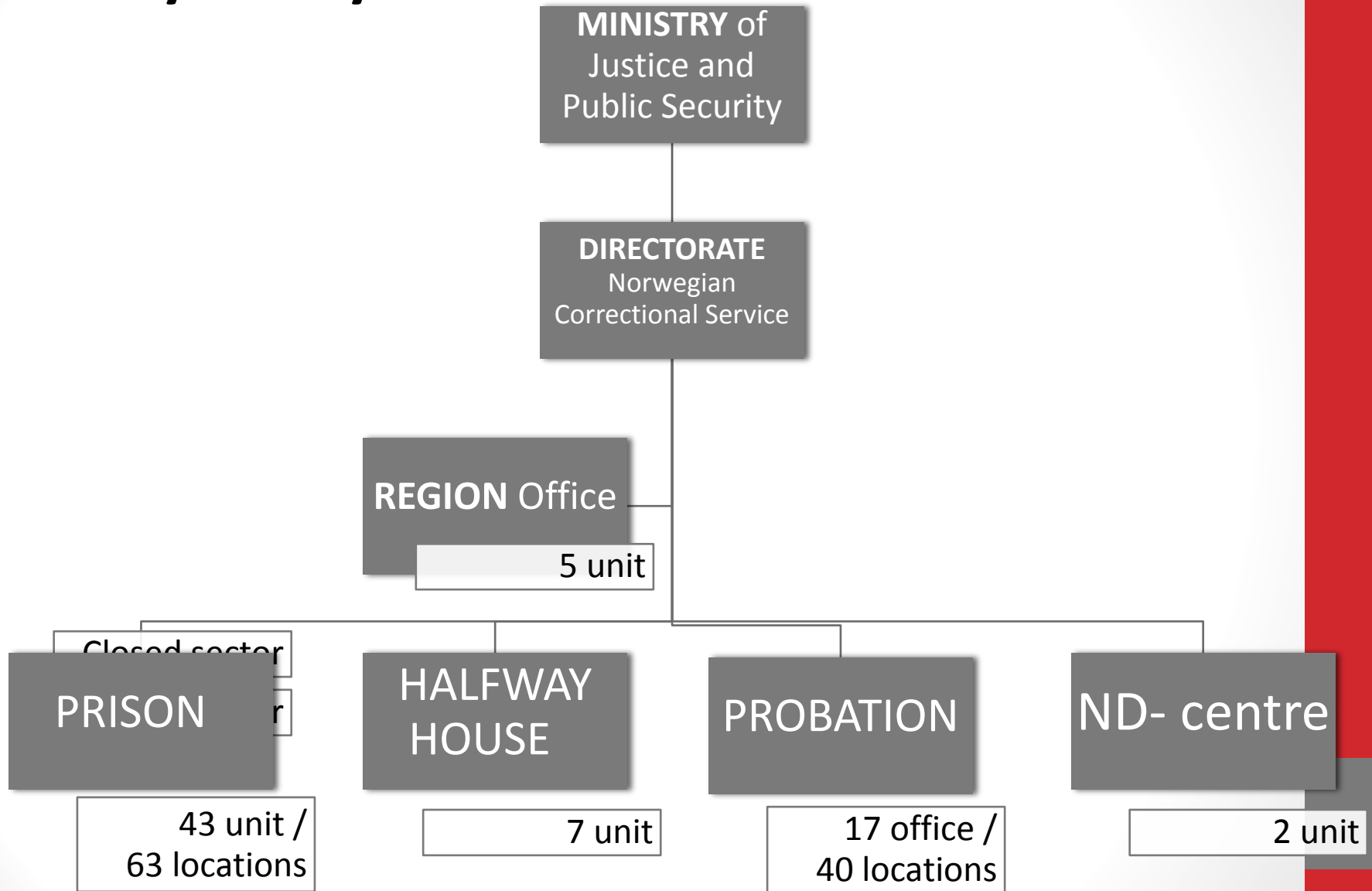
REINTEGRATION



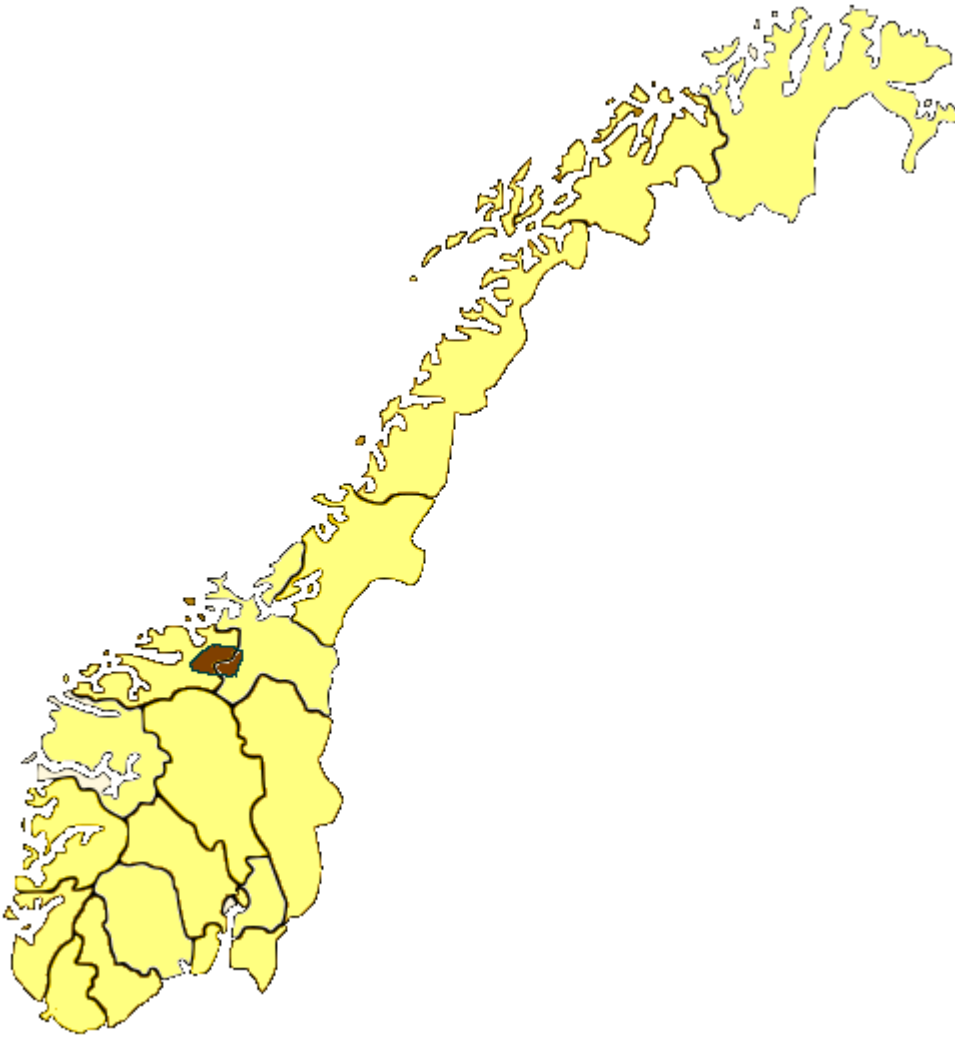
- Principle of **normality**
- Gradually: high - lower - half way house
- Release on license – stimulated
- Individual risk – needs – resources
- **Import Modell**
Imported from community:
medical/education/
employment/church/library
service

The more closer a system is, the harder it will be to return to freedom!

Norway to day -



ORGANIZATION



- ☐ 43 prison
- ☐ 61 locations
- ☐ 2/3 high-security
- ☐ Oslo: 392 cells
- ☐ Sandaker: 13 cells
- ☐ Tot: 3 900 cells
- ☐ 21 years / 30 year sentence
- ☐ 8 mnd. average
- ☐ 60% unconditional prison – 3 mnd.
- ☐ 90 % unc. less than 1 year
- ☐ One – man – one cell
- ☐ Waiting list
- ☐ Escapes
- ☐ Leaves
- ☐ 3 600 staff / 325 probation

Contents of the sentence – decided by The Correctional service. Unconditional imprisonment

- ☐ Various types of security levels
- ☐ In treatment or special care institution
- ☐ Home detention – ½ time
- ☐ Home detention with electric monitoring
- ☐ Release on license

The prisoner make the application.

The correctional services grant / deny the application.

Rules and regulations.

The governor has the authority to decide these decisions

In connection with reparations for release - the prison governor together with the staff decide:

- ☐ Out of prison with prison officers - **excorte.**
- ☐ **Transfers internally** to another unit with lower security.
- ☐ **Moving** to another prison – with lower security
- ☐ **Leave** out of prison (1/3 of the sentence time or before)
 - Ordinary leave with / without conditions
 - Pre-parole leave
 - Work or school - outside the prison during the sentence.
- ☐ **Release** on 2/3 of the sentence until 10 year
- ☐ **Refuse release** on 2/3 time – new proceedings after limited time
- ☐ Transfer in to **home detention** after 1/2 time of sentence with less than 1 year left for 2/3 time
- ☐ Together with probation decide **the condition on release** – period of 4, 6 or 12 months

Prison staff -

Staff Academy

- ☐ Two-years education
- ☐ Full payed
- ☐ Psychology, criminology, law, human rights and ethics
- ☐ Unarmed
- ☐ 40% female officers
- ☐ Contact officer

Contact officer -



Bergen Prison -



Bergen prison -



Open unit -



Open unit -



Convict who has served his sentence:

- ☐ Drug-free / has control of his drug use
- ☐ Suitable place to live
- ☐ Read and write
- ☐ Has a chance on the labour market
- ☐ Relate to family, friends and the rest of society
- ☐ Live an independent life

Government consider that a good point of departure on release increases the probability of succeeding a life without crime -

Challenges today -

- ☐ Growing numbers of foreigners
- ☐ Psychiatric or other mental health difficulties
- ☐ Offenders under 18 year
- ☐ Preventive detention

Norwegian success?

- ☐ Human rights

- ☐ Professionalism

- ☐ 2010: 20% reoffending within two years