



UNIVERSITY PROPERTIES OF FINLAND LTD

Future learning environments Campus retrofitting

Olli Niemi, Adjunct professor, R&D&I

Suvi Nenonen, Adjunct professor,

University Properties of Finland Ltd.

Tampere University of Technology

Agenda

Introduction

CARE - CORE

Co-creation

Co-financing

Co-evaluation

Conclusions

University Properties of Finland Ltd.

In 2010 we decided to have ambitious vision: **The most respected campus developer in Europe**

- Founded in 2009, in connection with the reform of the Finnish University Law
 - Owners and users: 10 universities outside the capital area
 - Asset value 1,11 billion €
 - Turnover 140 M€ (2014)
 - 1,3 million sqm, 19 campuses
 - 115 000 students in the premises
 - Approx. 6 500 pupils in training schools
 - 20 000 persons working in the premises
 - Only 36 employees
- =>network organisation



CAMPUSES All over Finland

Hämeenlinna

Hämeenlinnan kaupunki: Seminaarin kampus

Jyväskylä

Jyväskylän yliopisto: Jyväskylän kampus

Kuopio

Itä-Suomen yliopisto: Kuopion kampus

Oulu

Oulun yliopisto: Kontinkankaan kampus

Oulun yliopisto: Linnanmaan kampus

Rovaniemi

Lapin yliopisto: Rovaniemen kampus

Tampere

Tampereen teknillinen yliopisto: Hervannan kampus

Tampereen yliopisto: Kaupin kampus

Tampereen yliopisto: Keskustan kampus

Vaasa

Vaasan yliopisto: Vaasan kampus

Joensuu

Itä-Suomen yliopisto: Joensuun kampus

Kajaani

Kajaani: Kajaanin kampus

Lappeenranta

Lappeenrannan teknillinen yliopisto:

Lappeenrannan kampus

Rauma

Turun yliopisto: Rauman kampus

Savonlinna

Itä-Suomen yliopisto: Savonlinnan kampus

Turku

Turun yliopisto: Turun kampus

Åbo Akademi: Turun kampus



27.10.2015

Hki

How to co-create processes, places and services
Åbo Akademi, Vaasan kampus
Olli Niemi - Suvi Nenonen

As a result of our research
all our new projects differ from traditional university
buildings

Jyväskylä - Ruusupuisto



Tampere - Kampusareena



Tampere - Arvo2



Turku - Medisiina D



Oulu - Uusi Hammas



Investment
portfolio
500 mill. €

Lappeenranta - Verso



All

- Are multiuse buildings
- Have shared spaces and services
- Active co-creation has an important role in every project

Agenda

Introduction

CARE - CORE

Co-creation

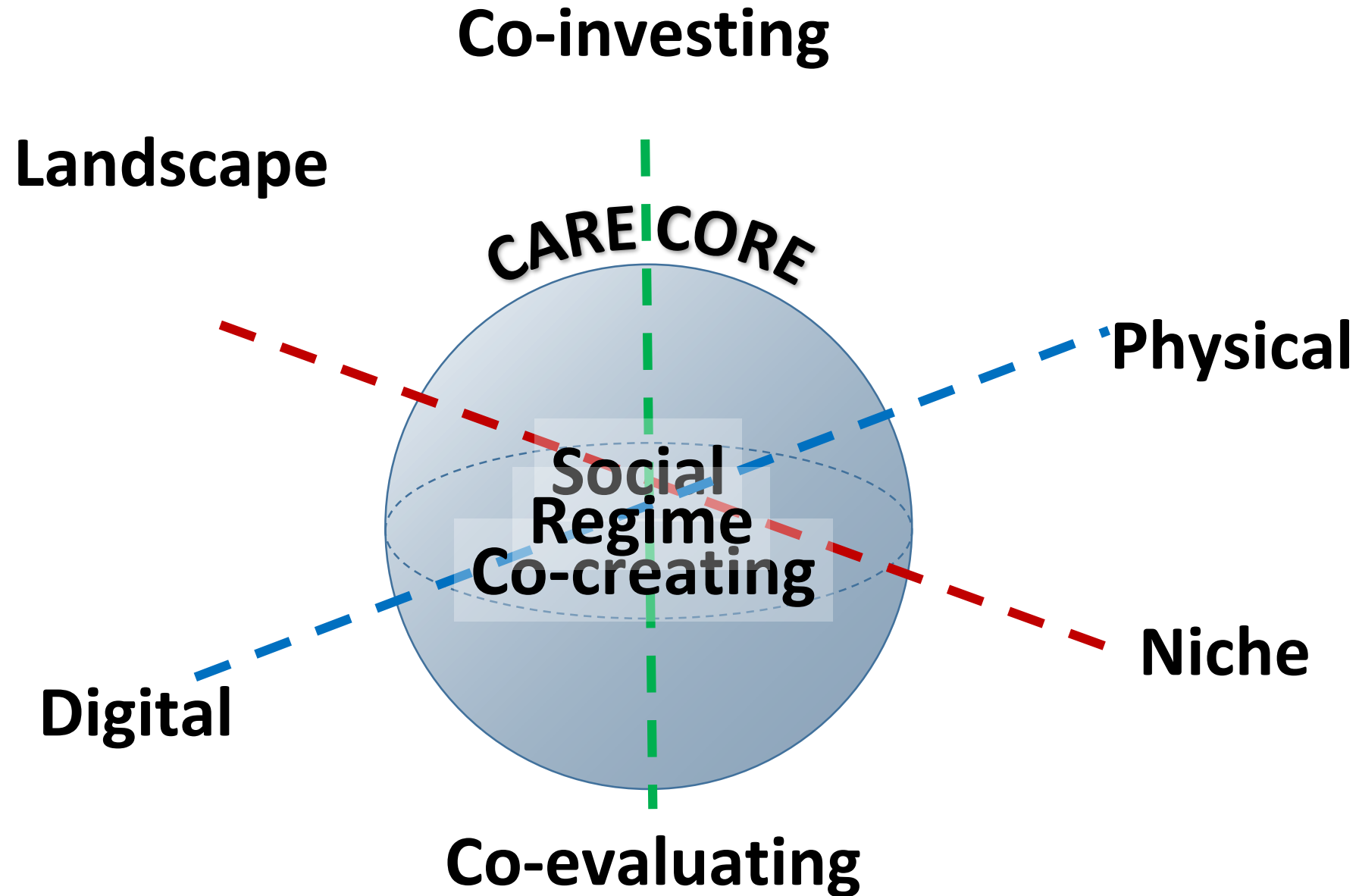
Co-financing

Co-evaluation

Conclusions

Campus Retrofitting Frame

Three dimensions and the core



Agenda

Introduction

CARE - CORE

Co-creation

Co-financing

Co-evaluation

Conclusions



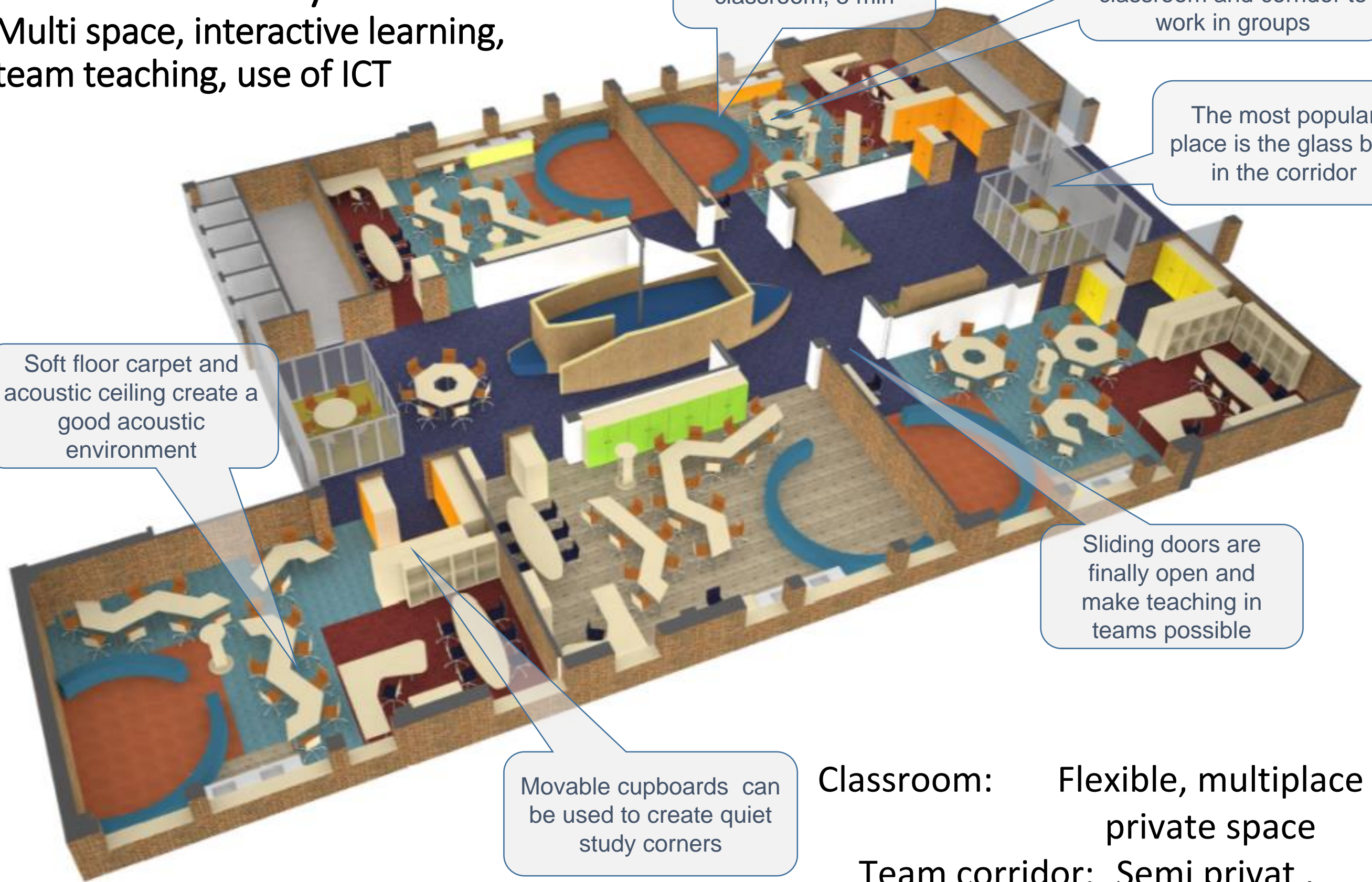
**Open flexible,
multiuse digital, social
and physical learning places**

**UBIKO
Training school in
University of Oulu**

- Teacher Training School aims to promote self regulated learning of pupils and team teaching
- New ways of learning in more collaborative way: various learning needs and teamwork between teachers
- Co-creation with teachers, an architect joined after the teachers had defined the goals of the change which is achieved by retrofitting process

Future UBIKO classroom in Oulu University

Multi space, interactive learning,
team teaching, use of ICT



Teacher can start the lesson in front of the classroom, 5 min

After the start the pupils spread out in the classroom and corridor to work in groups

The most popular place is the glass box in the corridor

Soft floor carpet and acoustic ceiling create a good acoustic environment

Sliding doors are finally open and make teaching in teams possible

Movable cupboards can be used to create quiet study corners

Classroom: Flexible, multiplace private space
Team corridor: Semi privat, Independet studies

New inspiring,
collaborative learning
and team teaching in
flexible places



The corridor is an active meeting place for small and large events.







Playfull Library University of Tampere

- Empty Book Storage is now a Living Lab for Playful Space for Learning and Collaboration at Work

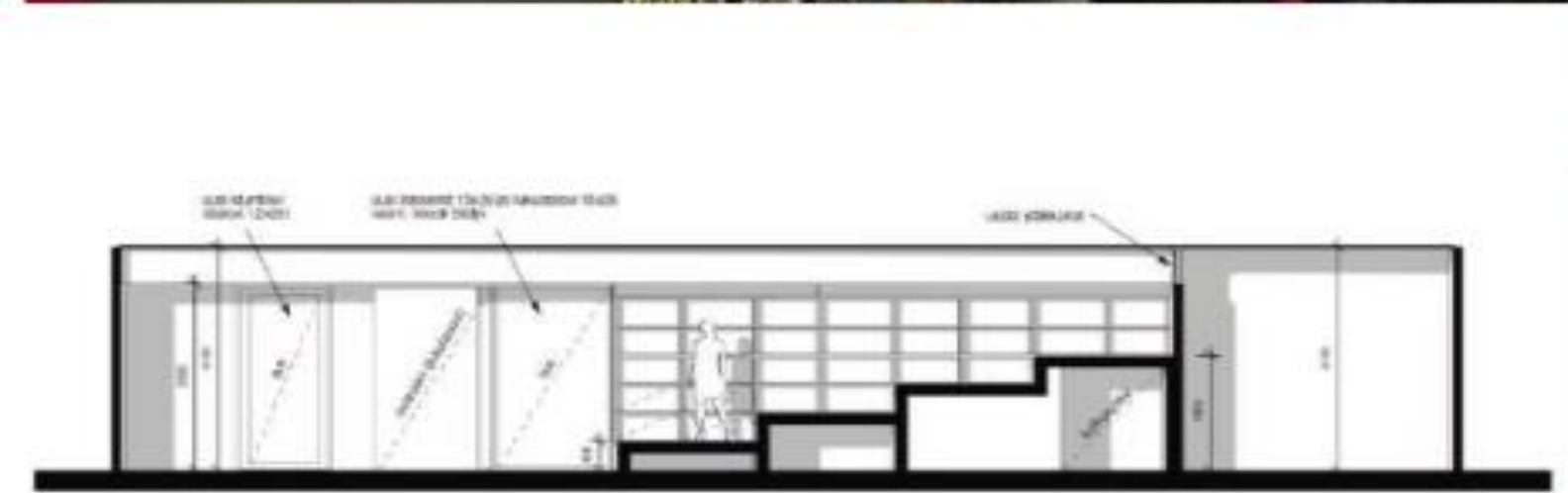
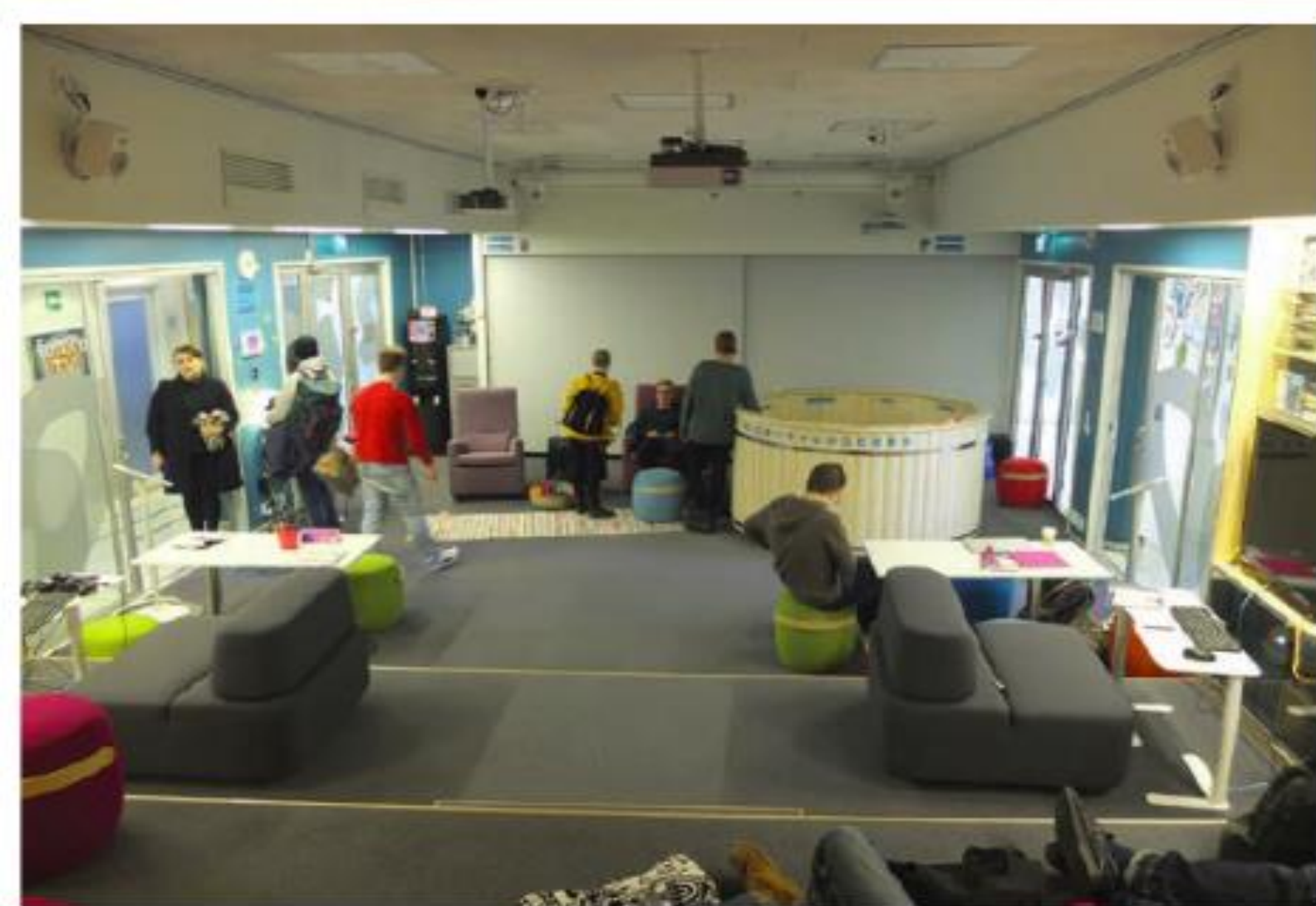
MurMurs: the talking, tweeting seats designed to make your office fun

CULTURE / 07 OCTOBER 13 / by LIAT CLARK



"I'm bored, no-one has sat on me for a while." This is what you'll see popping up in your Twitter feed if one of your MurMurs has been neglected for too long, Timo Nummenmaa tells Wired.co.uk. Nummenmaa is part of a research team at the University of Tampere's Games Research lab in Finland that is looking for new ways to capitalise on the hybridisation of toys and gaming -- as perfected





Agenda

Introduction

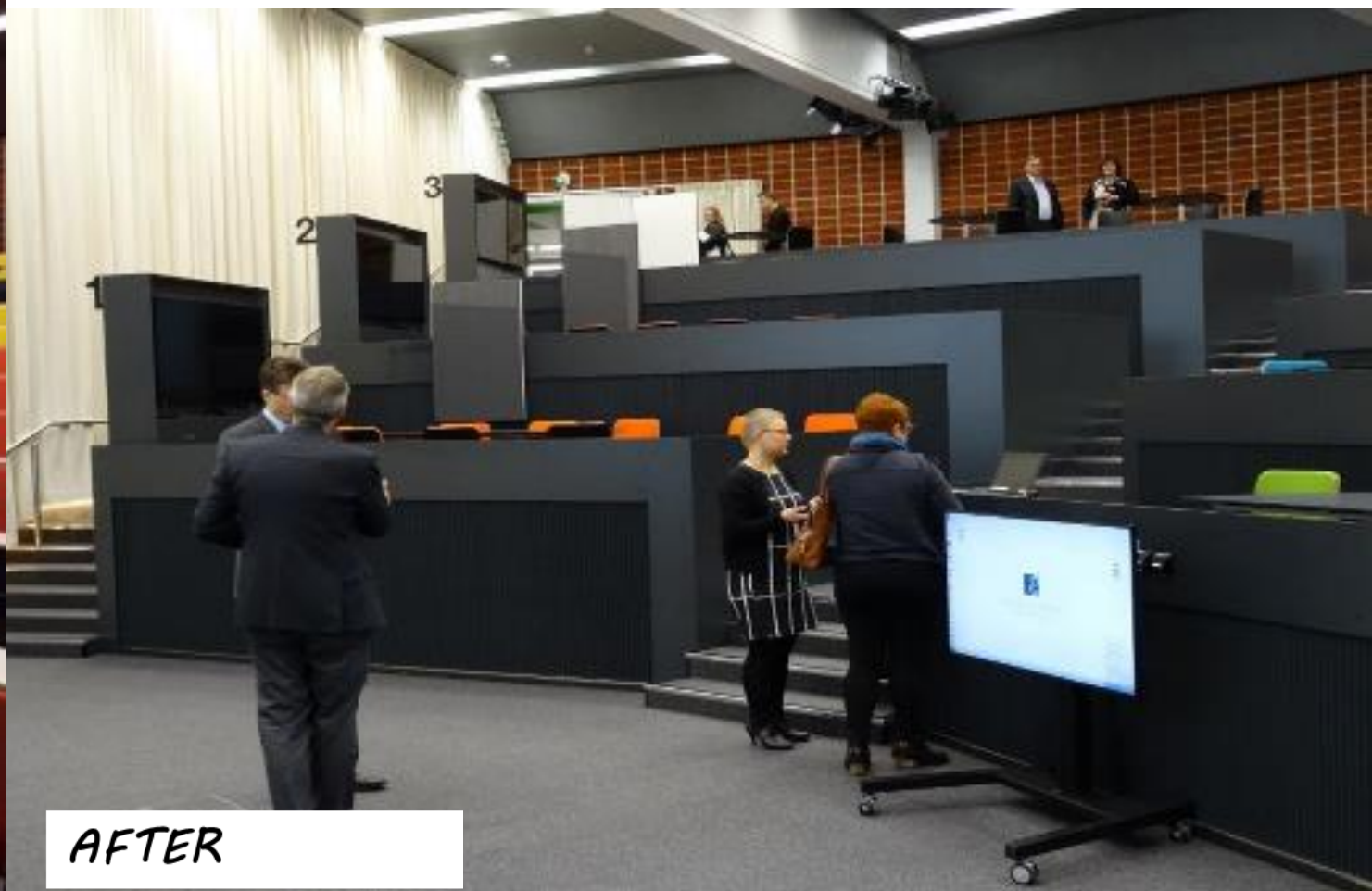
CARE - CORE

Co-creation

Co-financing

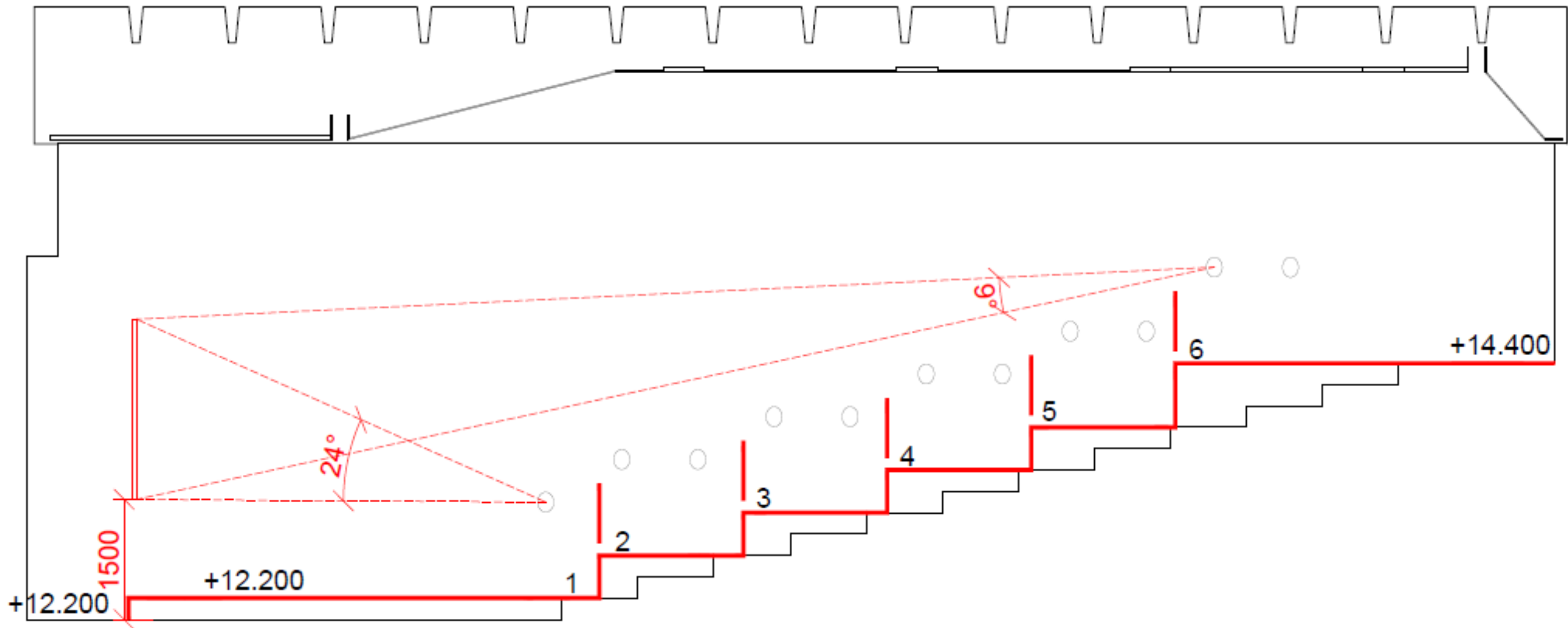
Co-evaluation

Conclusions

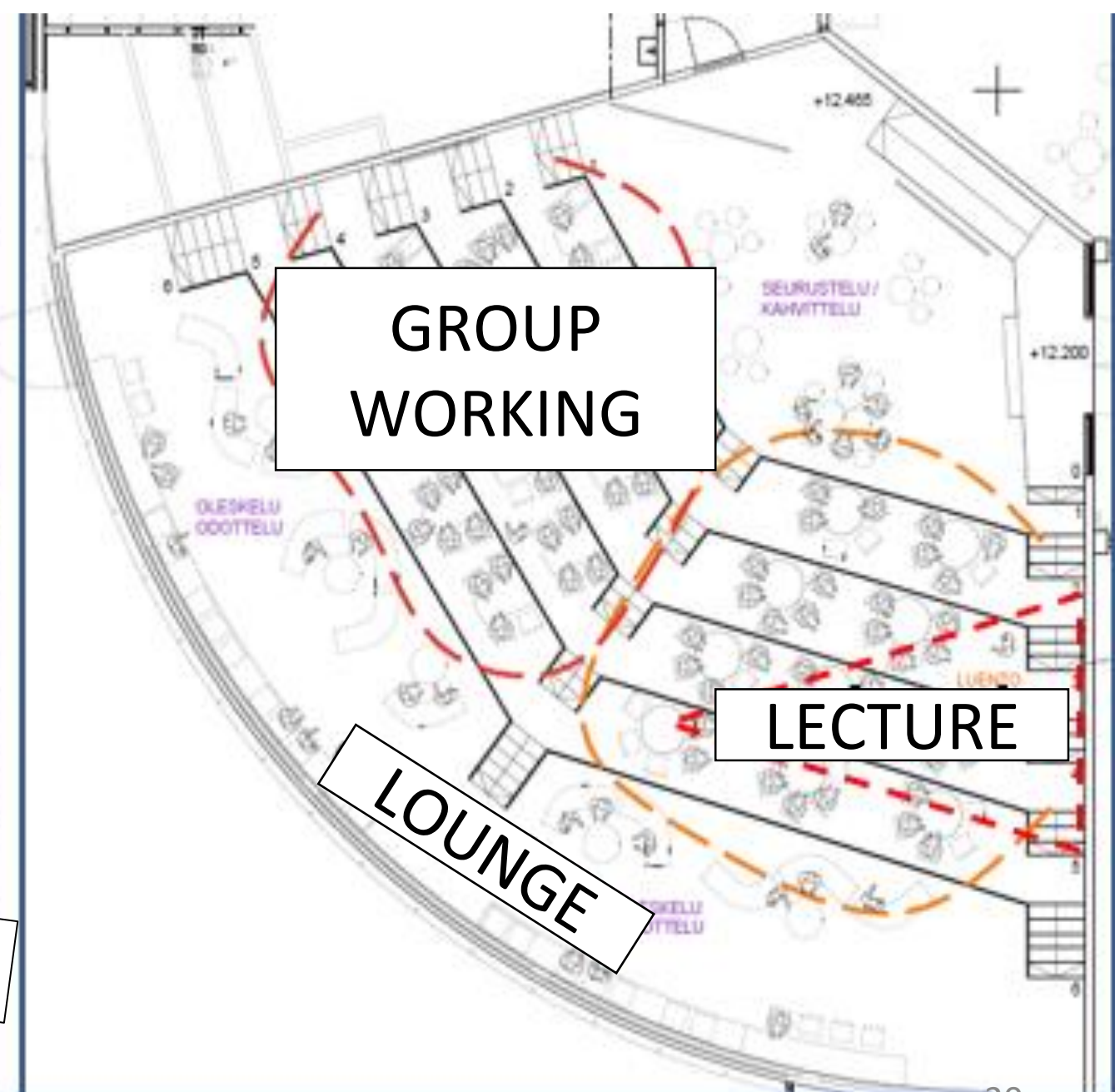


Interactive Auditorium University of Oulu

- 3 auditoriums were renovated by 500 000 € per auditorium
- UPF: Traditional Building based retrofitting 500 000 €
- UPF: Evidence based Retrofit of the auditorium +200 000 €
- University of Oulu: Furniture and equipment +200 000 €



KATSELUKULMAT, ESIMERKKI: 2,25m kuvakorkeus









Agenda

Introduction

CARE - CORE

Co-creation

Co-financing

Co-evaluation

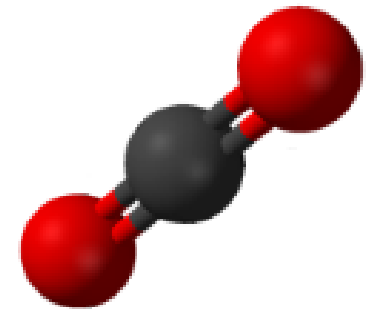
Conclusions

We need evidence: Measurements before and after

Collection of data

- User experiences: Happy or not questions and explanations by QR codes
- Changes in use rates and ways of use by Interval cameras
- Changes in indoor air conditions: Wirepass wireless sensors

Measurement tools



Initial situation



Design



Idea:

How the rise of floor level effects on the use of the lobby

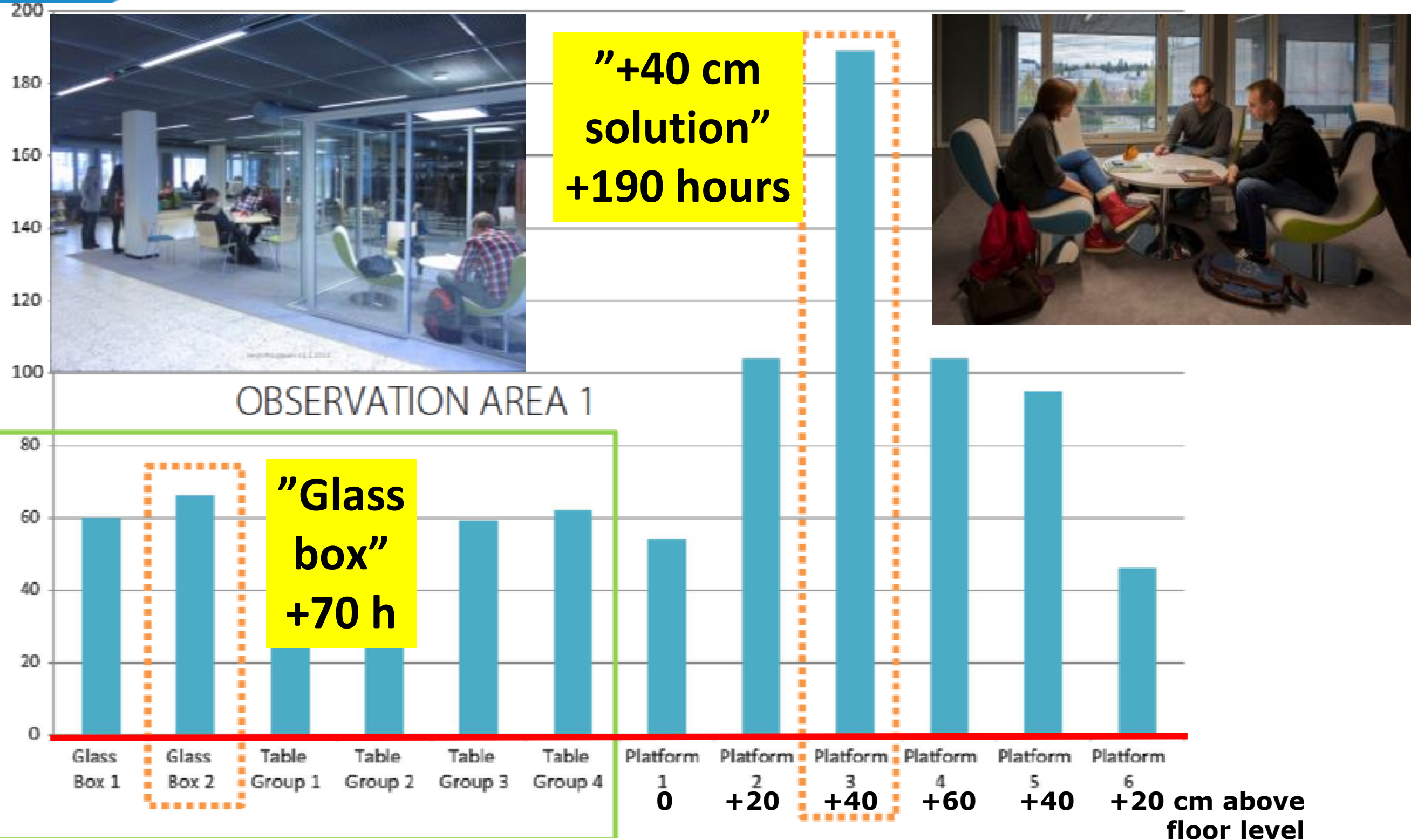
Before furnishing and use



In use



New solutions make university lobbies and corridors alive



Agenda

Introduction

CARE - CORE

Co-creation

Co-financing

Co-evaluation

Conclusions

Conclusions

- Every property owner has a budget for repair and maintenance: this can be used as a seed money for co-investing with users!
- Instead of repairing and retrofitting the building one can respond to the needs of the future – involve users! (Activity based retrofitting)
- Measure and collect evidence!(Evidence based retrofitting)

Conclusions

- CARE-CORE lists and visualizes and helps to structure the intangible but essential perspectives when retrofitting places, processes and people's behavior.
- After collaborative retrofitting campus should give more value to their users.

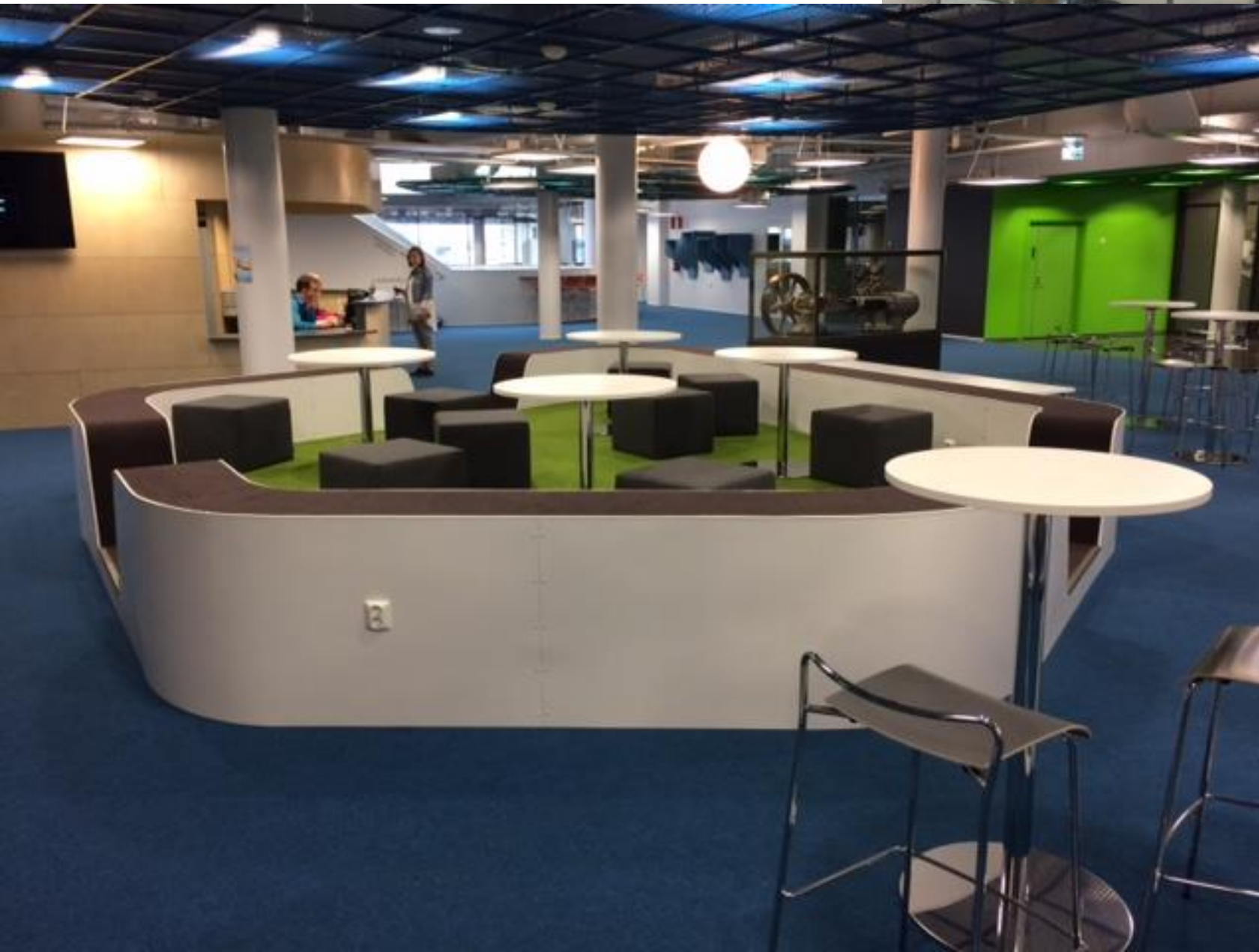
http://sykoy.fi/wp-content/uploads/co-create_valmis_pieni.pdf



How to

CO-CREATE

campus ?



Questions?

Kampusareena as a case is
One of the most attractive places in Finnish universities

Every campus needs multidisciplinary meeting hub